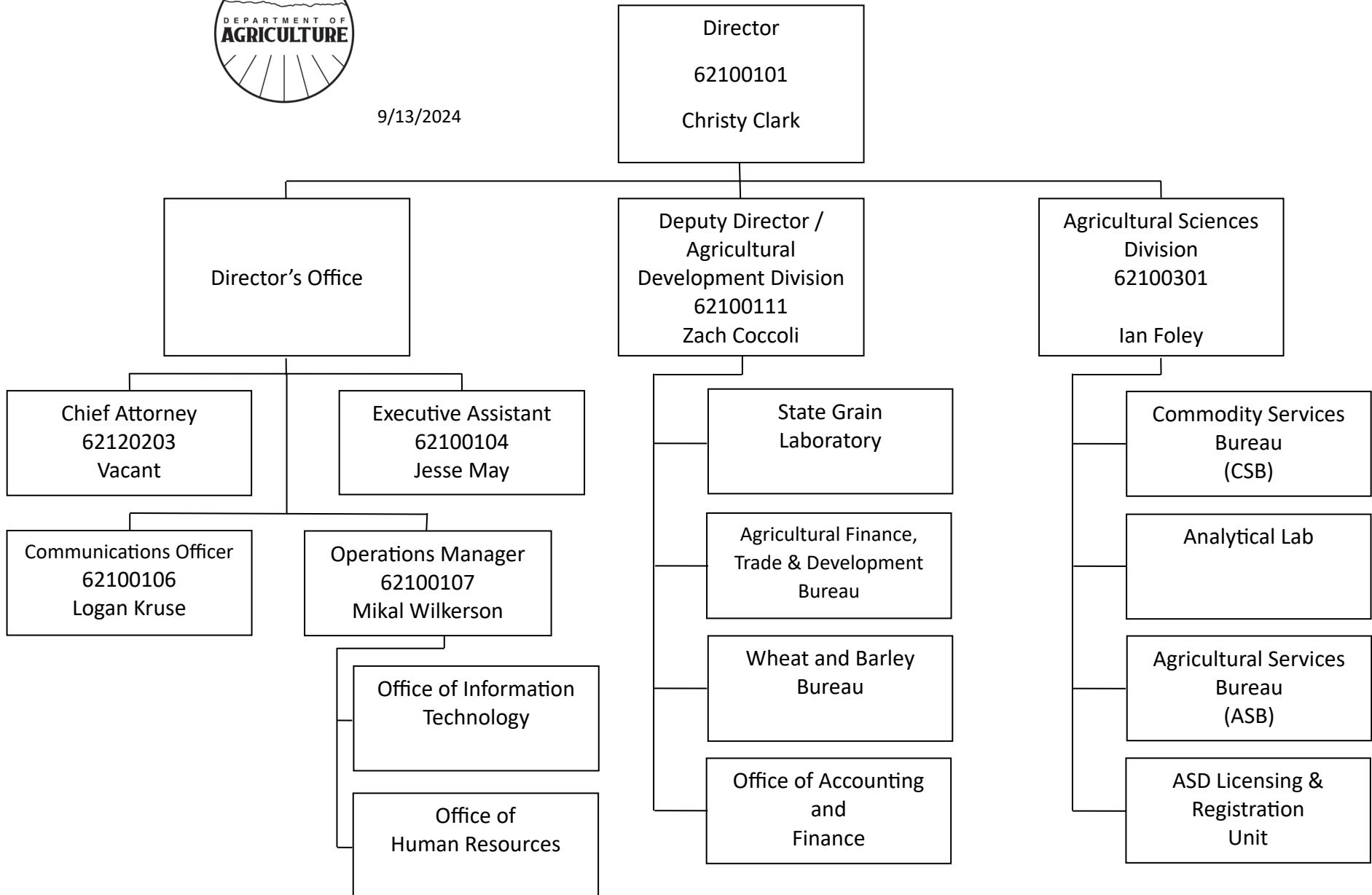


Montana Department of Agriculture



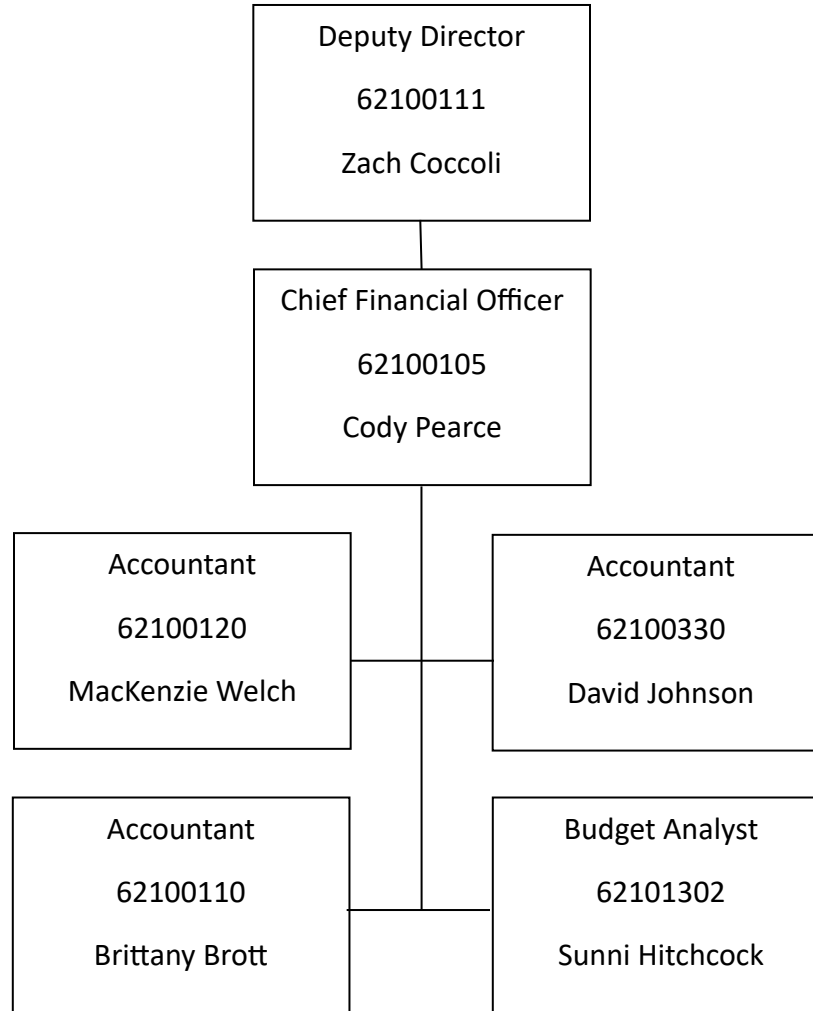
9/13/2024



Fiscal Services

Dept of Agriculture

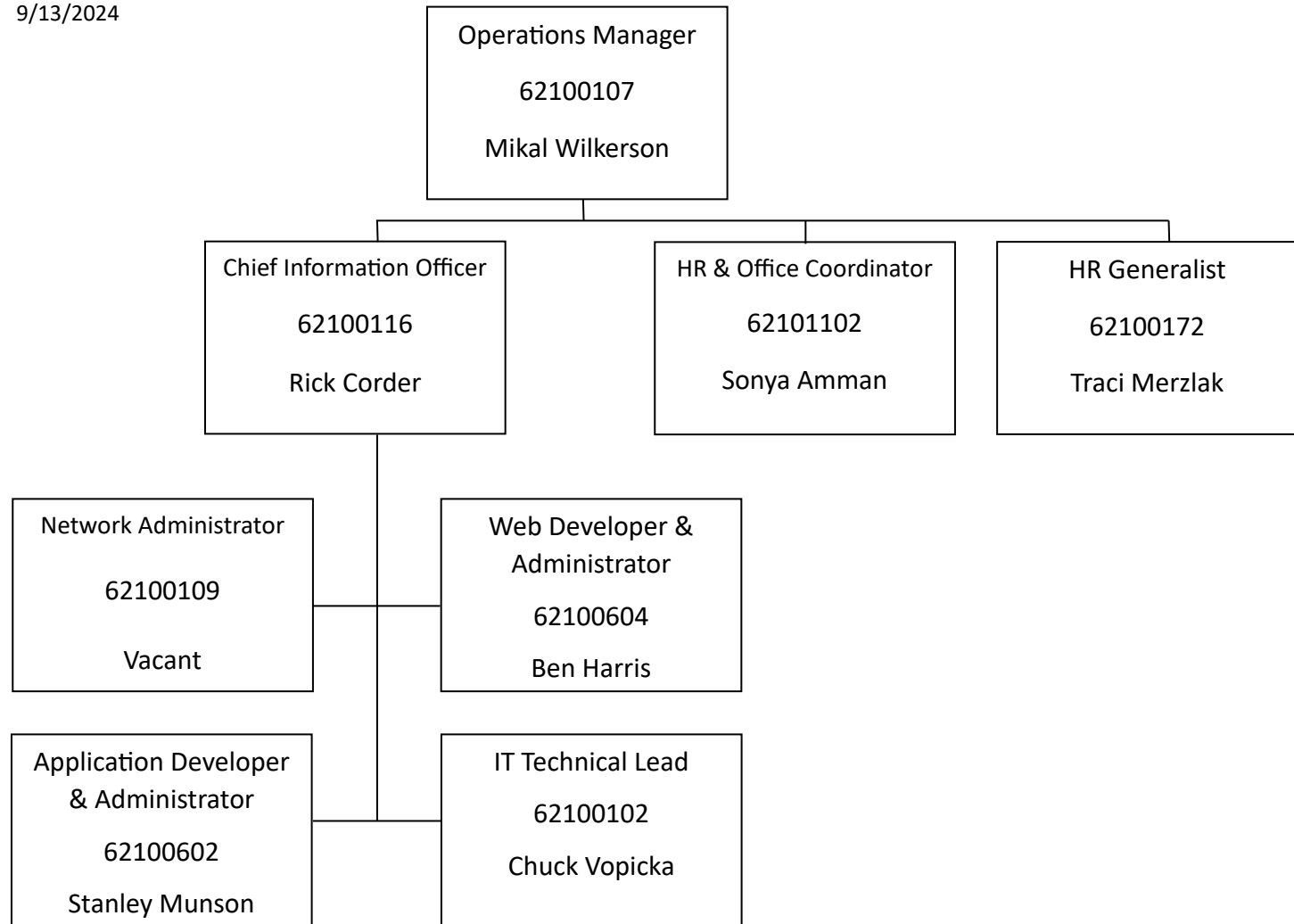
Updated: 9/13/2024



Information Technology / Human Resources

Dept. of Agriculture

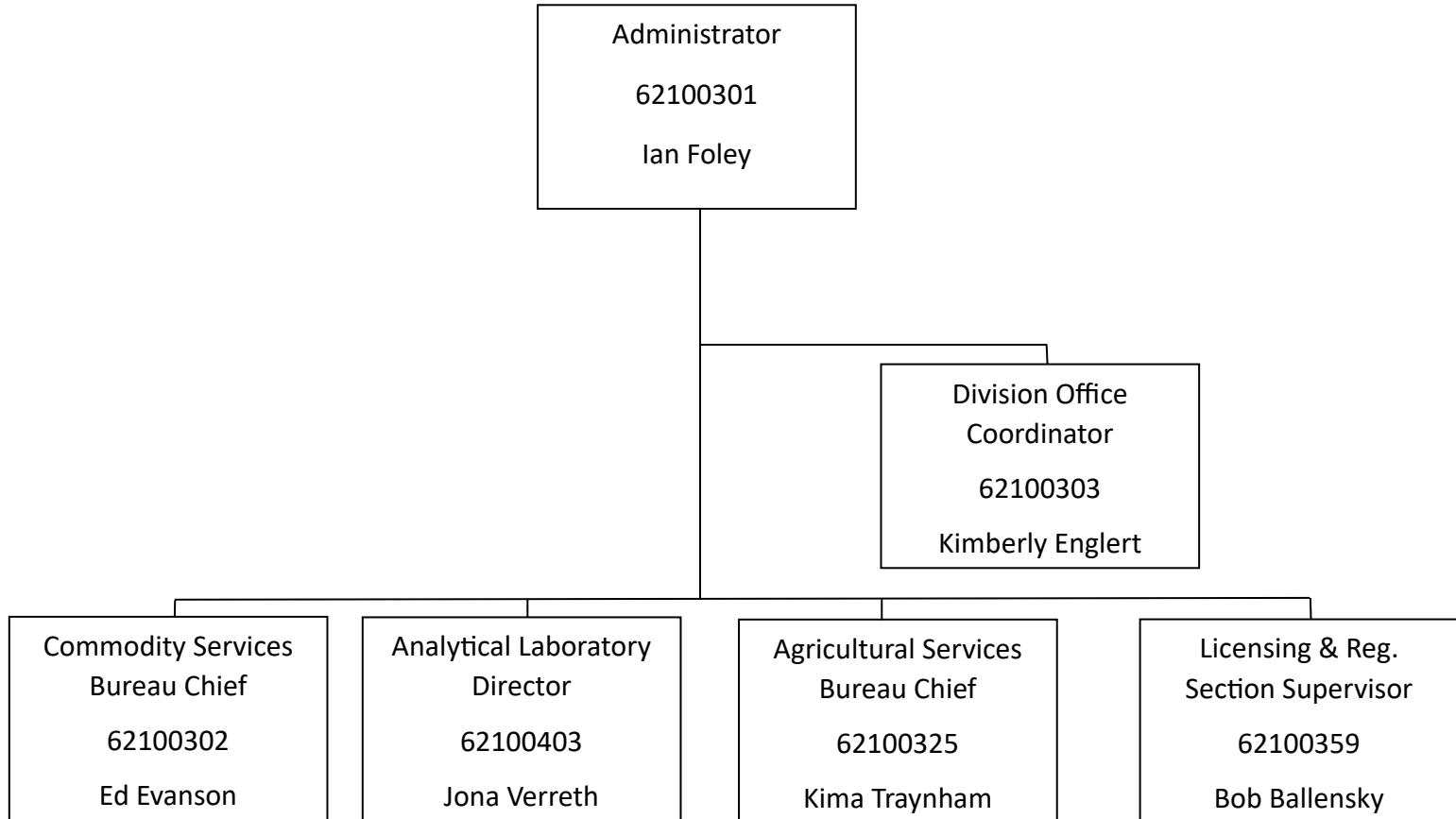
Updated: 9/13/2024



Agricultural Sciences Division

Dept. of Agriculture

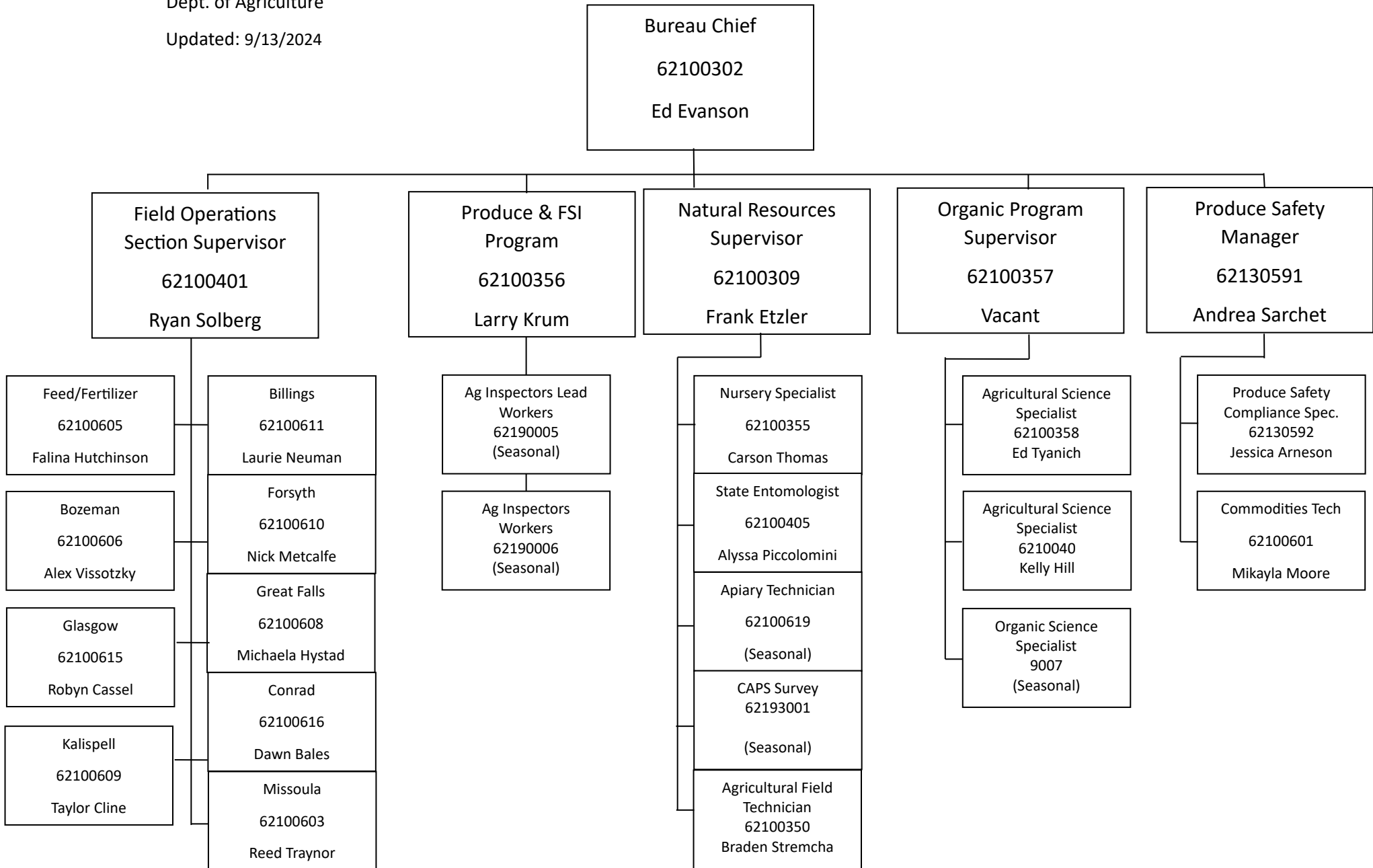
Updated: 9/13/2024



ASD Commodity Service Bureau

Dept. of Agriculture

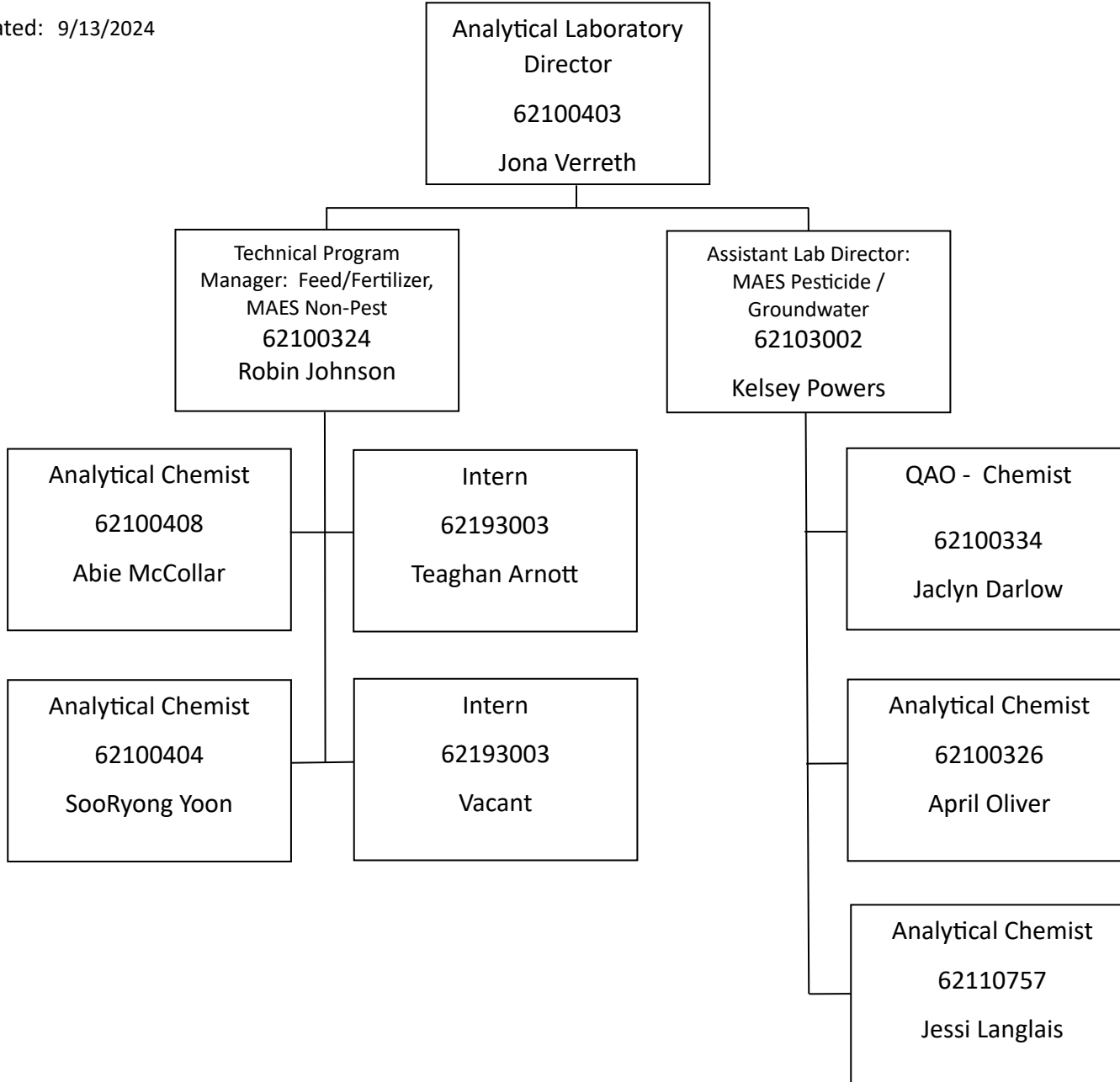
Updated: 9/13/2024



ASD Laboratory

Dept. of Agriculture

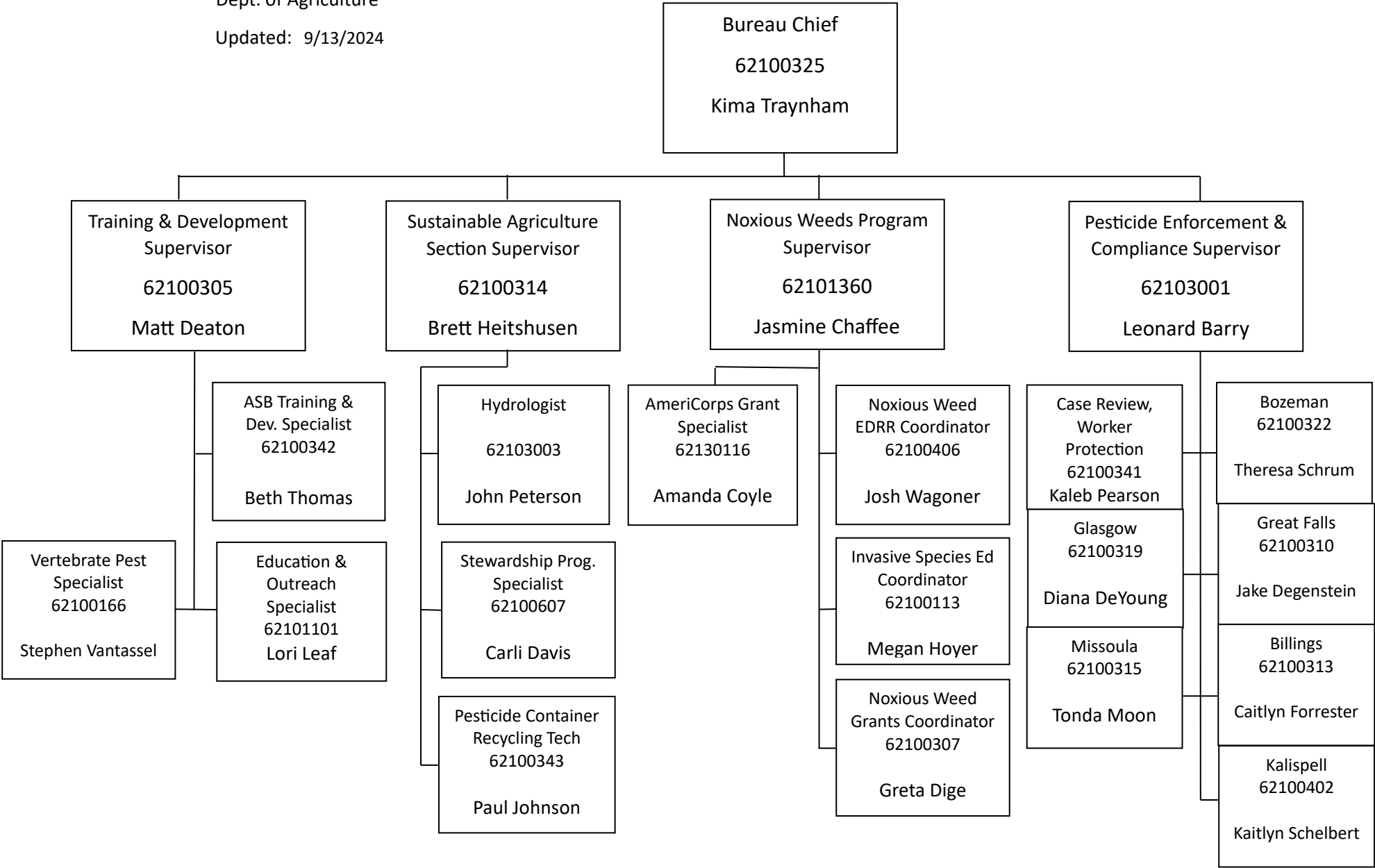
Updated: 9/13/2024



ASD Agriculture Services Bureau

Dept. of Agriculture

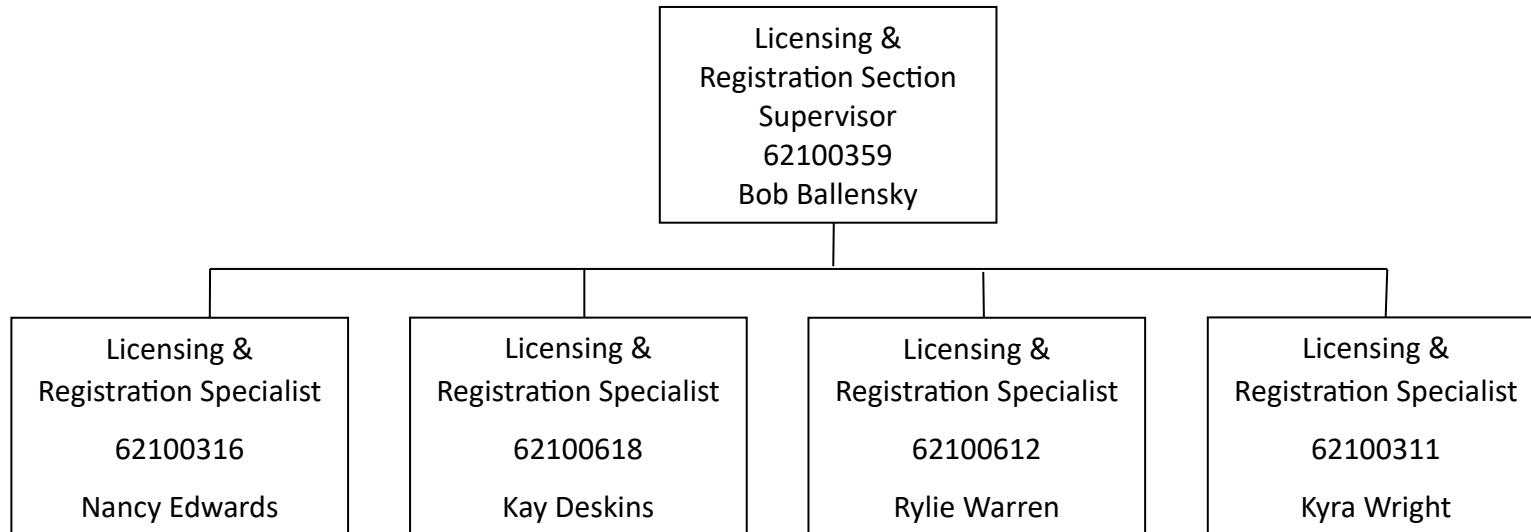
Updated: 9/13/2024



ASD Licensing & Registration Unit

Dept. of Agriculture

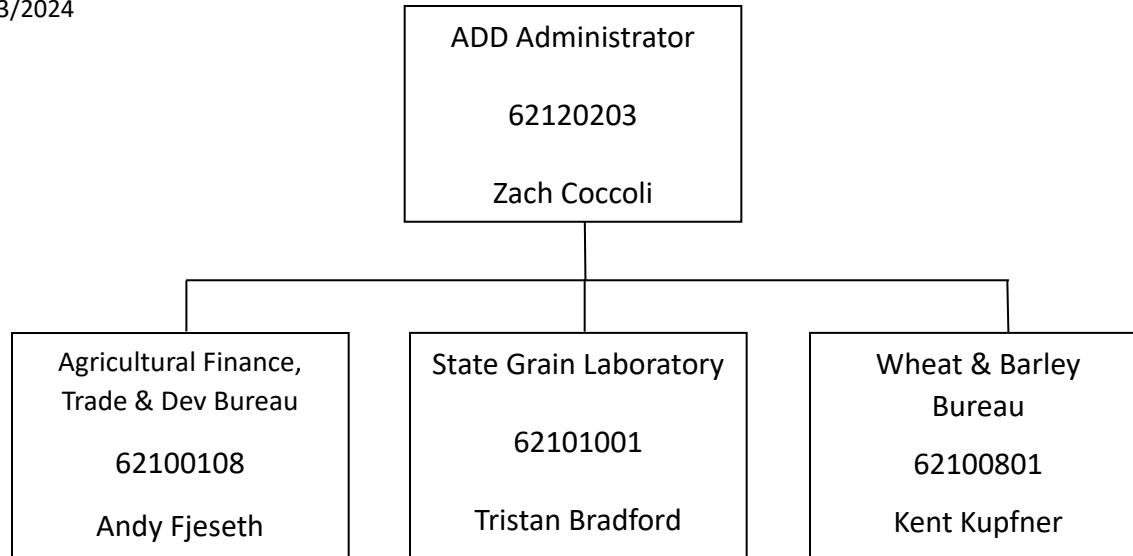
Updated: 9/13/2024



Agricultural Development Division

Dept. of Agriculture

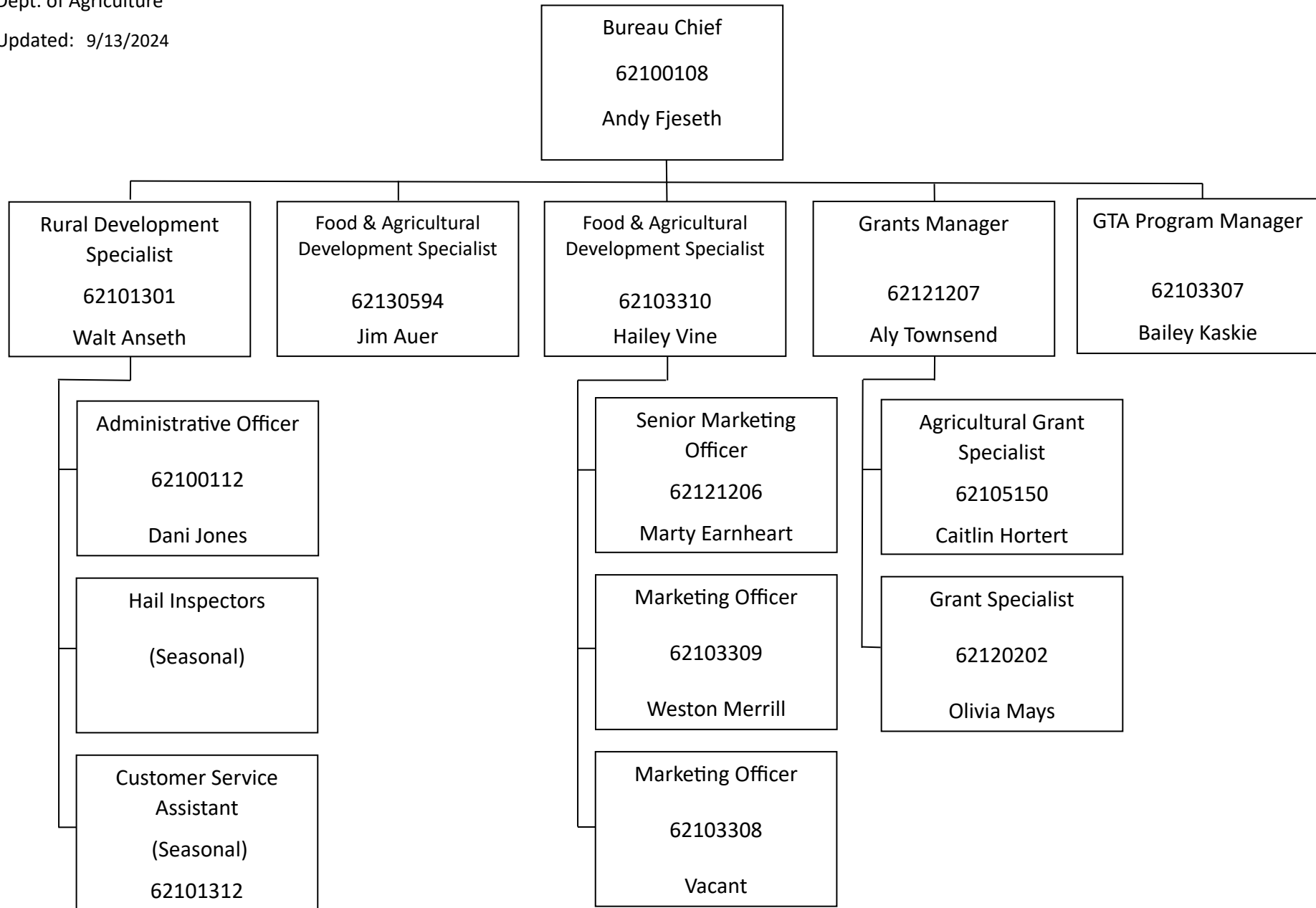
Updated: 9/13/2024



ADD Agricultural Finance, Trade & Development Bureau

Dept. of Agriculture

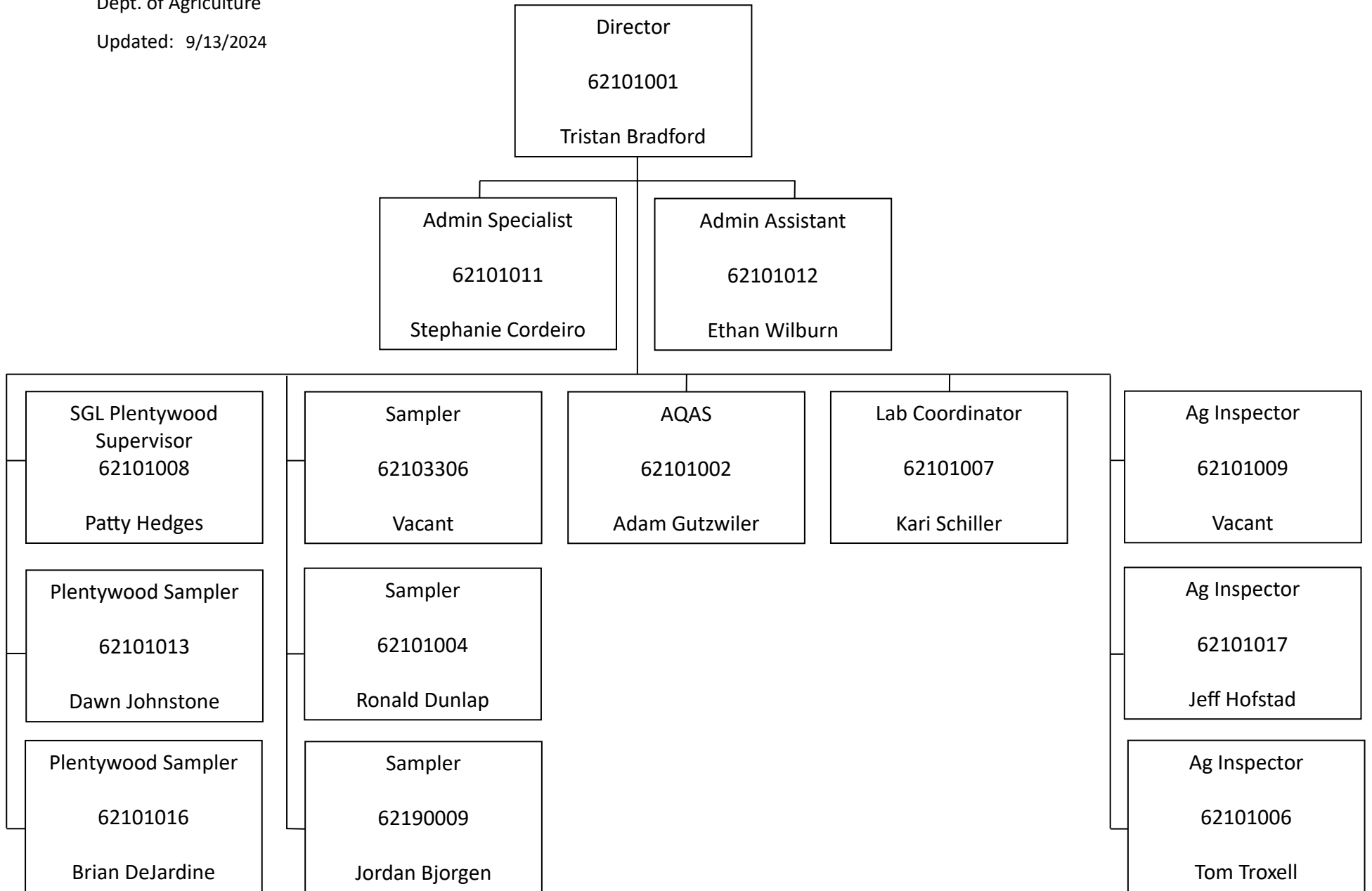
Updated: 9/13/2024



ADD State Grain Laboratory

Dept. of Agriculture

Updated: 9/13/2024



ADD Wheat & Barley Bureau

Dept. of Agriculture

Updated: 9/13/2024

